



ASPECT

MEDIA VILLAGE

SHELLABERGER

WEST STAGE	22,000 SF
EAST STAGE	22,000 SF
OUTDOOR STAGE	10,000 SF
SHED	4,000 SF
OFFICE SUPPORT	11,750 SF
PRODUCTION SUPPORT	5,020 SF

BENILDUS

OFFICE & SUPPORT	33,000 SF
------------------	-----------

GARSON

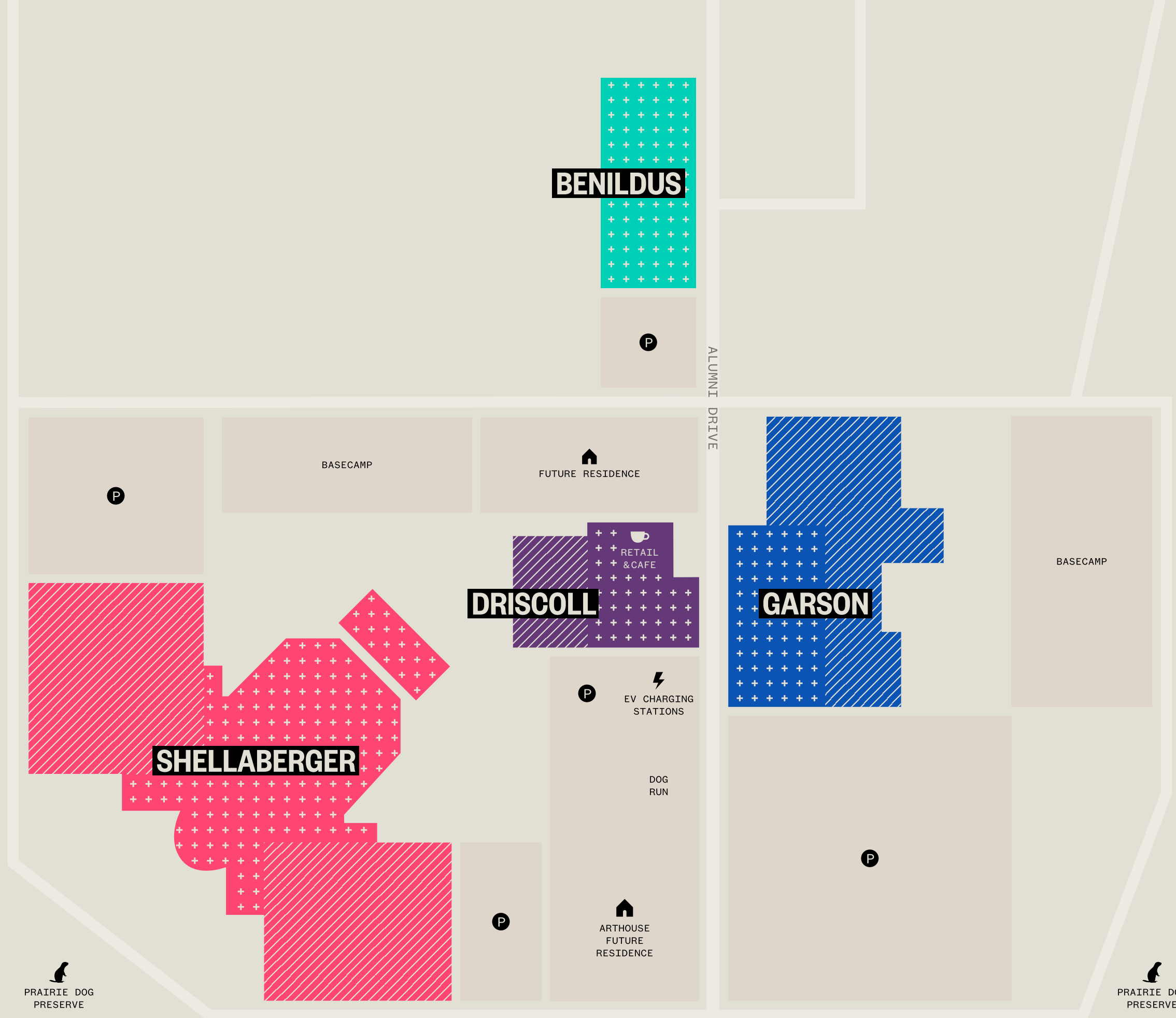
STAGE A	14,000 SF
STAGE B	7,500 SF
STAGE C	2,600 SF
THEATRE	2,500 SF
OFFICE & SUPPORT	14,500 SF
PRODUCTION SUPPORT	13,360 SF

DRISCOLL

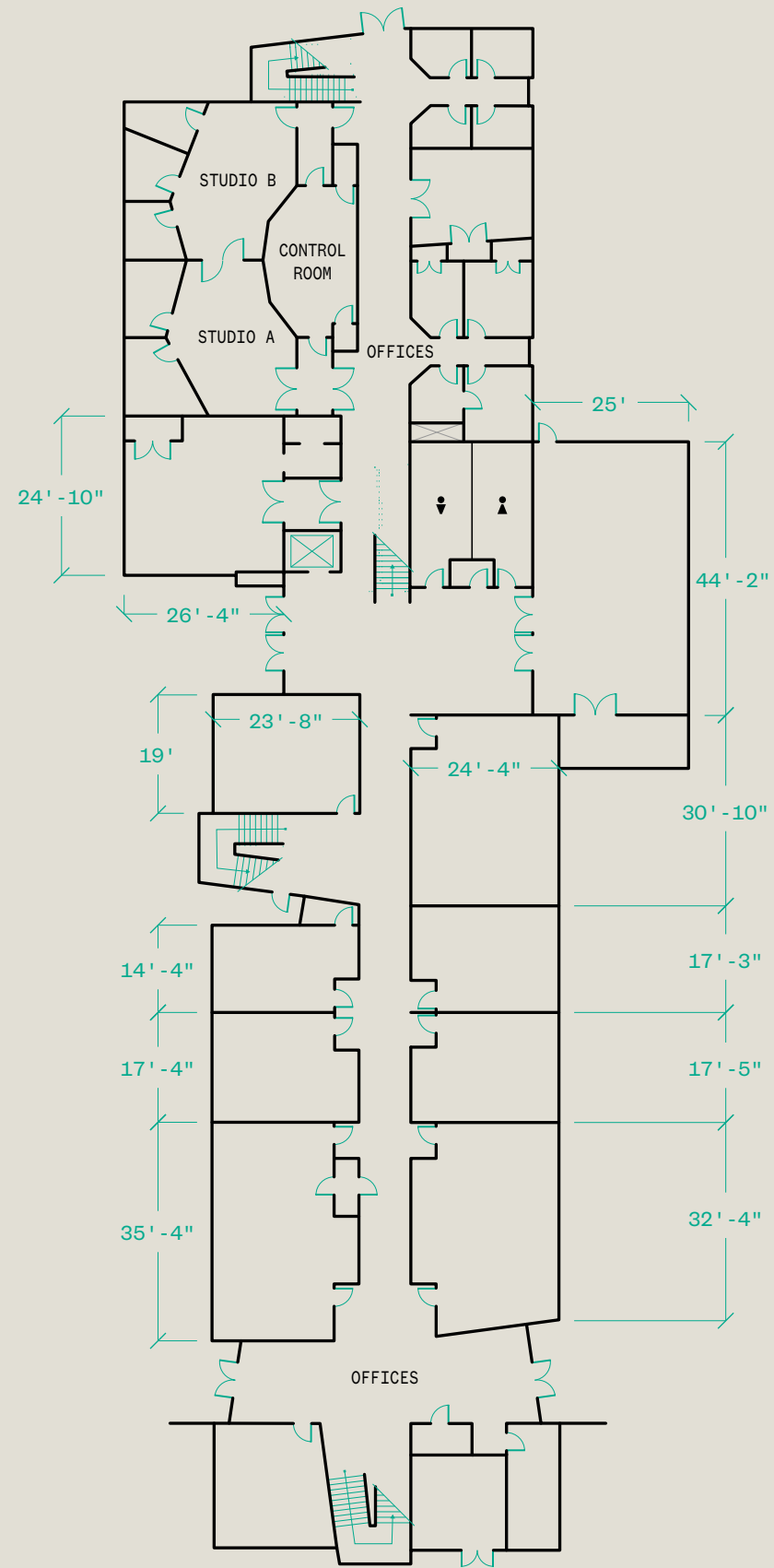
STAGE	11,000 SF
OFFICE & SUPPORT	7,000 SF
ALL DAY CAFE	4,000 SF

 OFFICE & SUPPORT
  SOUNDSTAGE

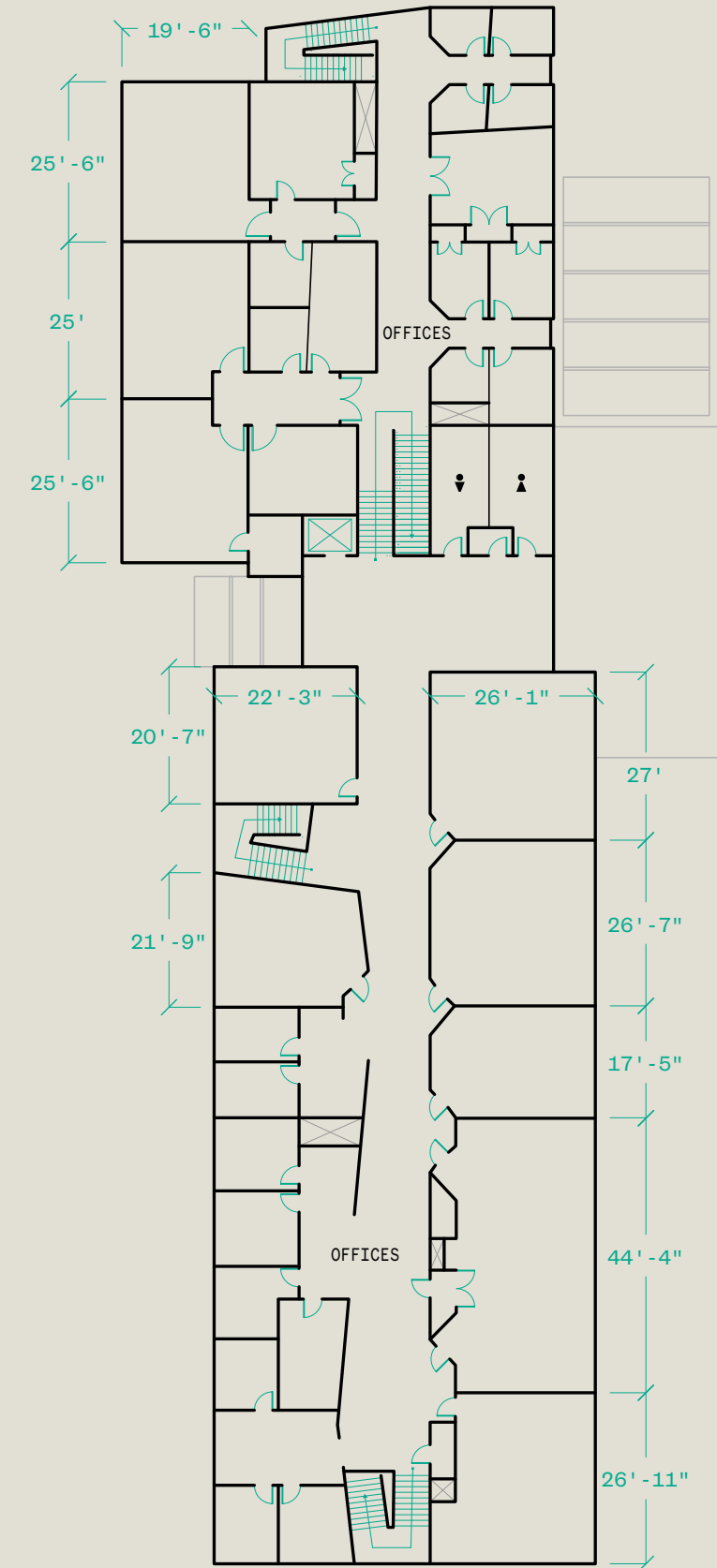
SITE MAP



LEVEL 1



LEVEL 2

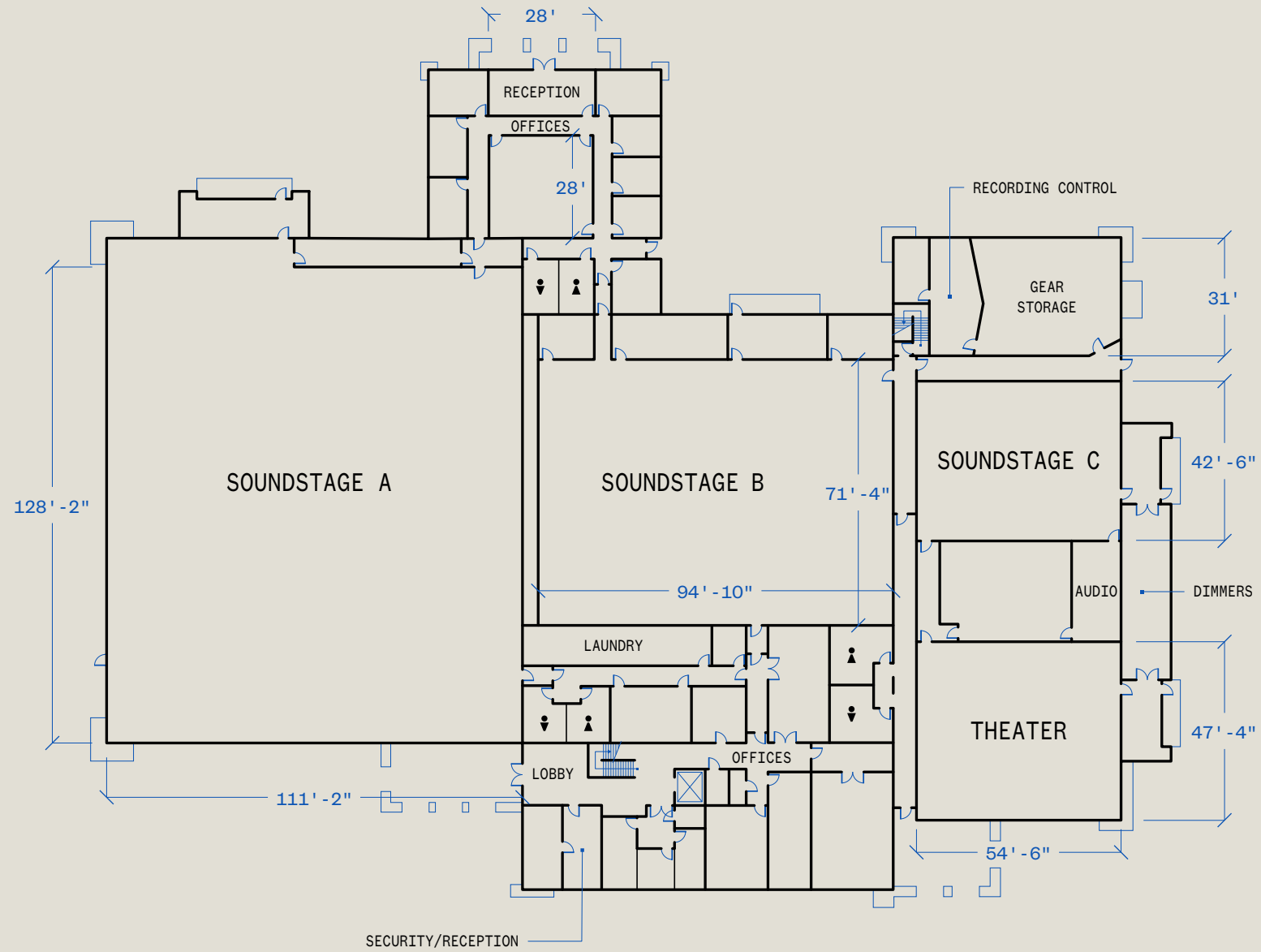


BENILDUS

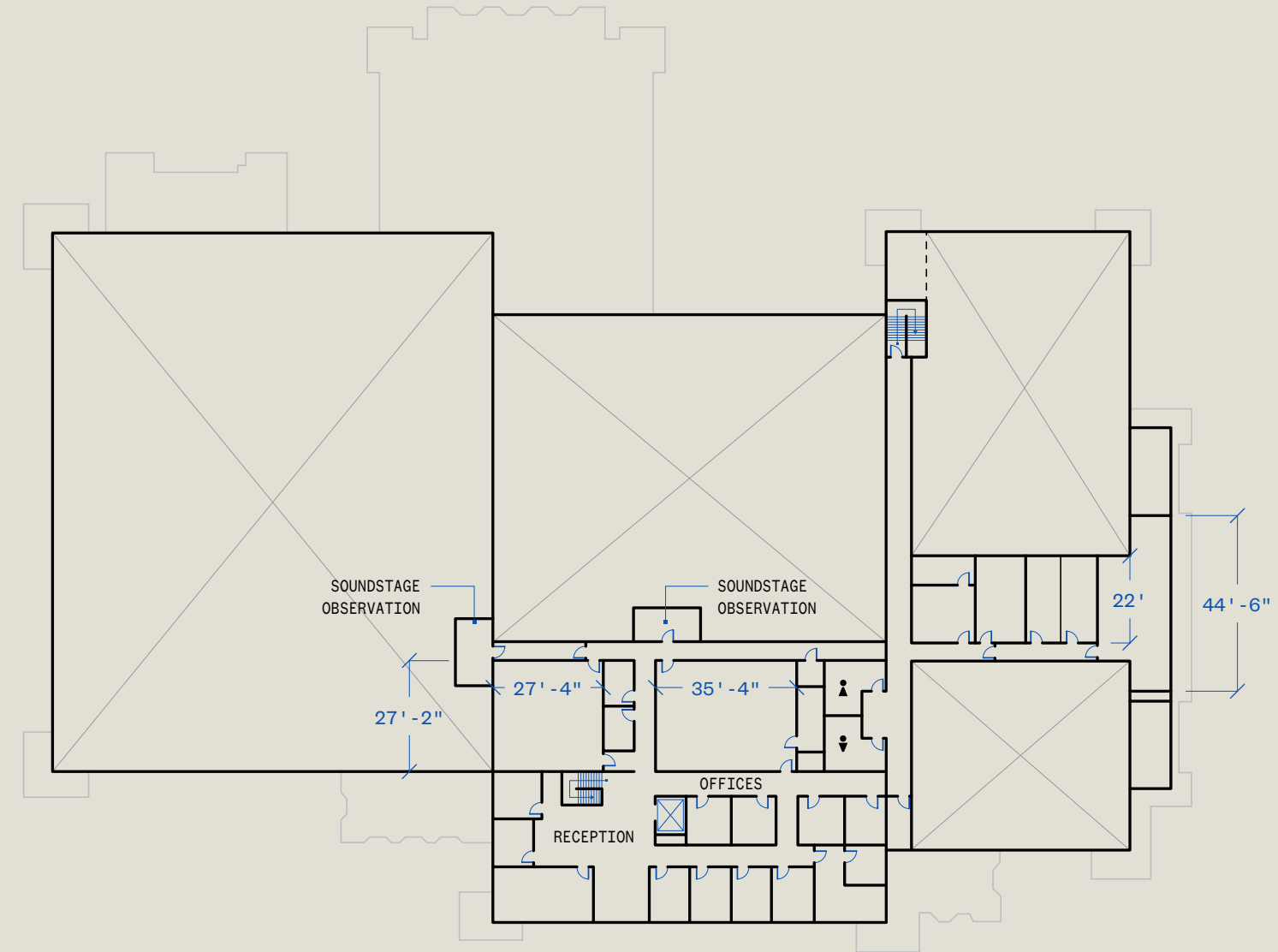
BENILDUS features 33,000 SF of high-quality executive offices and post-production suites set on a landscaped park with 30 parking spaces.

OFFICE & SUPPORT 33,000 SF

LEVEL 1



LEVEL 2



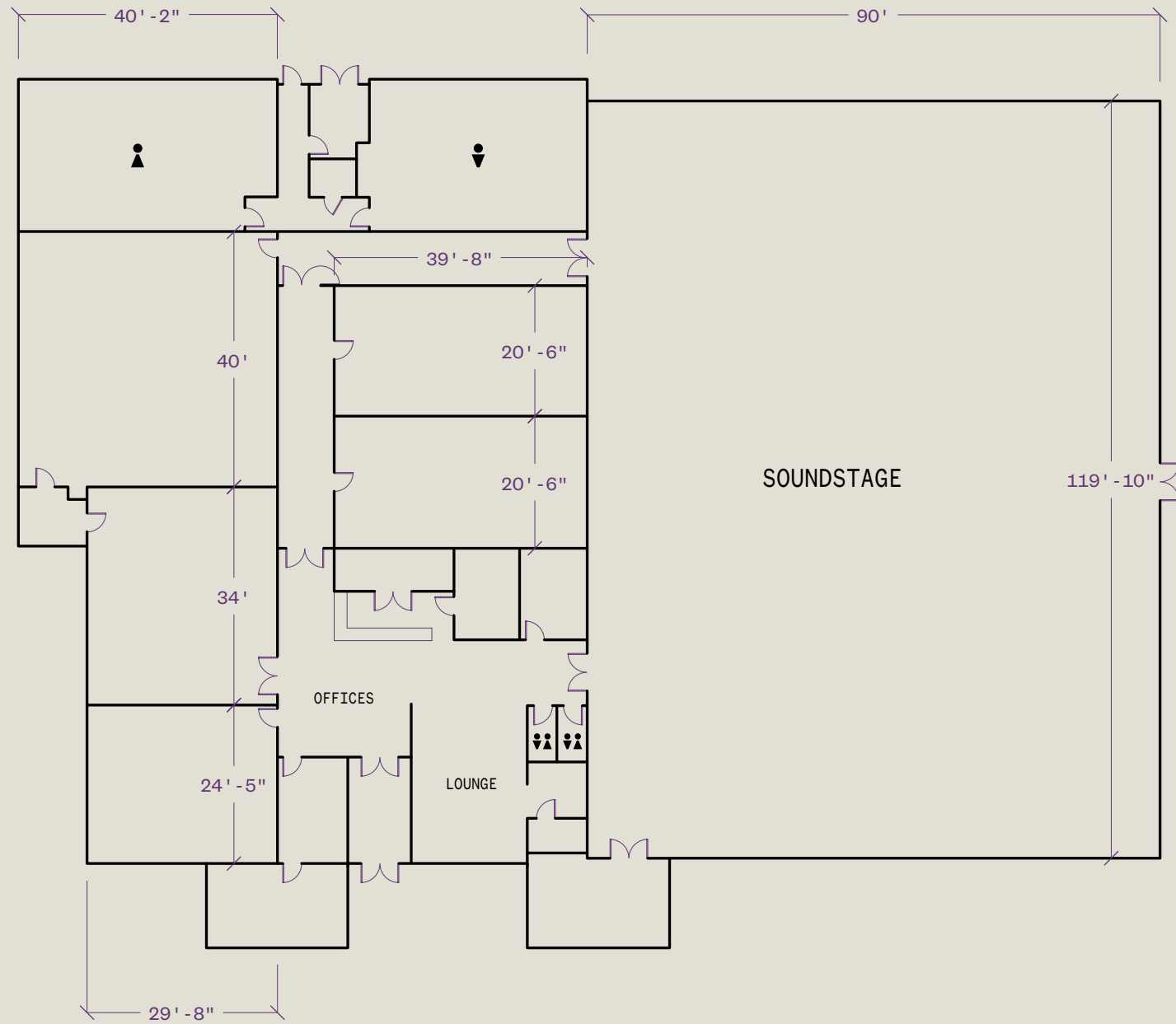
GARSON

GARSON features three soundstages totaling 25,000 SF, a 3,000 SF full service movie theater/screening room, 25,000 SF of executive offices and production support and 6 acres of basecamp and parking.

- STAGE A** 14,000 SF
- STAGE B** 7,500 SF
- STAGE C** 2,600 SF

- THEATER** 2,500 SF
- OFFICE & SUPPORT** 14,500 SF
- PRODUCTION SUPPORT** 13,360 SF

LEVEL 1



DRISCOLL features one 11,000 SF soundstage with 7,000 SF of production support, a 4,000 SF cafe and all day dining/catering venue with private outdoor recreation space and 1 acre of basecamp and parking.

DRISCOLL

- STAGE** 11,000 SF
- OFFICE & SUPPORT** 7,000 SF
- ALL DAY CAFE** 4,000 SF



Contact

aspectmediavillage.com
info@aspectmediavillage.com

Address

1954 Siringo Road
Santa Fe, NM 87505